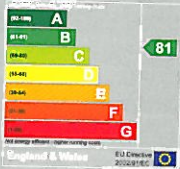


# bampton

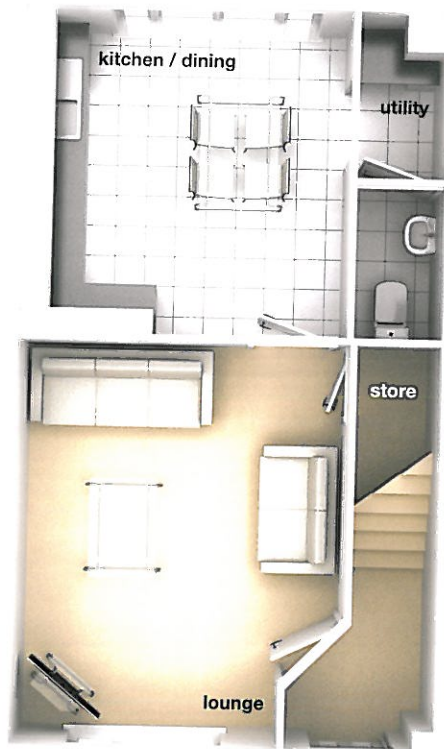
3 bedroom home



Energy Efficiency

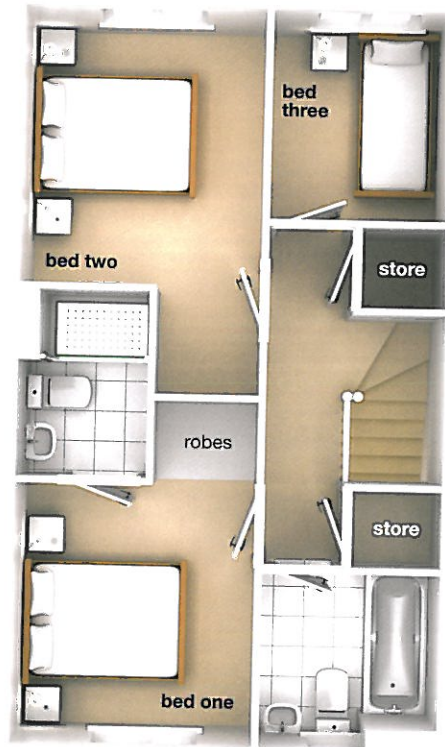


Environmental Impact (CO<sub>2</sub>)



lounge\* 3.66 x 4.47 (12'0" x 14'8")  
 kitchen / dining 3.62 x 3.59 (11'11" x 11'10")  
 utility 0.95 x 1.83 (3'1" x 6'0")  
 w.c

\*maximum dimensions



bedroom one 2.64 x 2.86 (8'8" x 9'5")  
 excl robes  
 en suite  
 bedroom two 2.64 x 3.04 (8'8" x 10'0")  
 bedroom three 1.92 x 2.29 (6'4" x 7'6")  
 bathroom

These particulars are intended as a preliminary guide for prospective purchasers and should not be relied upon. The elevational treatment for individual house types shows a typical arrangement. Details of materials and design treatments may vary. Any artist impressions shown are not intended to represent any particular plot. Purchasers are advised to inspect the approximate overall finished room sizes and are subject to normal building tolerances (i.e. ± 75mm). Where described as 'maximum' this dimension is the longest available in that direction in that room. In all instances purchasers are advised to inspect plot specific information which is available from our sales team. Nothing in these particulars or verbal assurance shall form or constitute part of any contract, and are given without any responsibility on behalf of Bloor Homes. PEA's shown are typical approximate predictions for that house type.