

THE Evesham

TWO BEDROOM HOME



The above illustration is a typical example of a Broadway and Evesham.



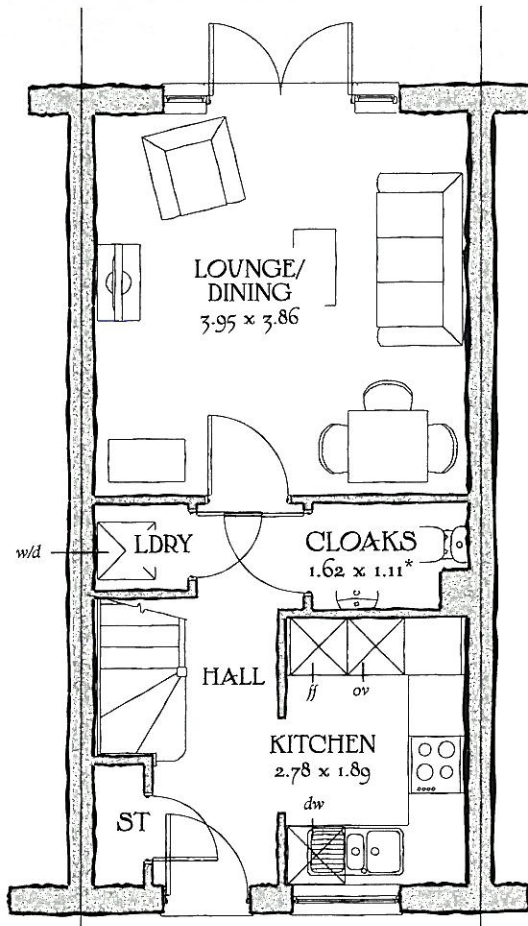
Proving that quality and craftsmanship are not exclusive to expensive properties, the Evesham embodies the essence of the New Heritage Collection, this simple yet spacious two bedroom home has a flow you'll feel immediately at ease with.

THE Evesham

TWO BEDROOM HOME

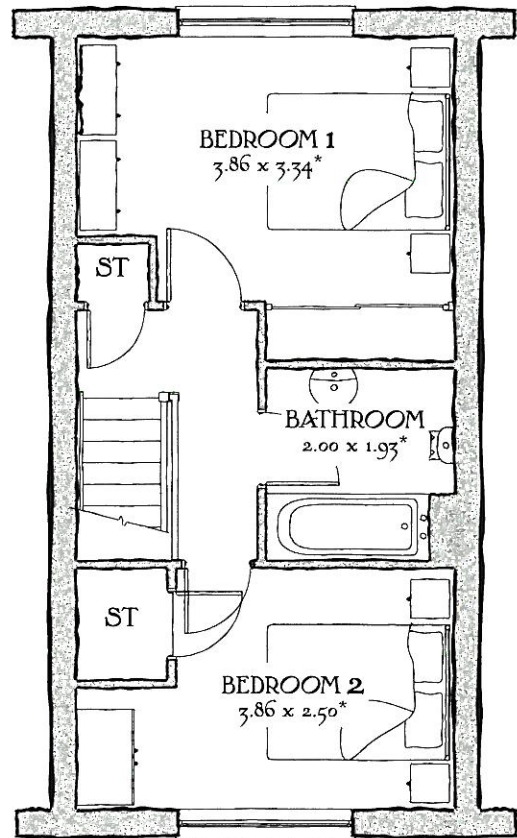
Reflecting the inspiration of the Arts and Crafts movement and driven by the desire to preserve individuality and craftsmanship.

The New Heritage Collection by Redrow, welcomes everyone in and leaves no-one out.



GROUND FLOOR

Lounge	12'11" x 12'8"	3.95 x 3.86 m
Kitchen	9'1" x 6'2"	2.78 x 1.89 m
Cloaks	5'4" x 3'8"	1.62 x 1.11 m*
Laundry	3'1" x 2'11"	0.95 x 0.90 m



FIRST FLOOR

Bedroom 1	12'8" x 11'0"	3.86 x 3.34 m*
Bedroom 2	12'8" x 8'2"	3.86 x 2.50 m*
Bathroom	6'8" x 6'4"	2.00 x 1.93 m*

Customers should note this illustration is an example of The Evesham house type. All dimensions indicated are approximate and furniture layout is for illustrative purposes only. Homes may be a 'handed' (mirror image) versions of the illustrations, and may be detached, semi-detached or terraced. Materials used may differ from plot to plot including render and roof tile colours. Detailed plans and specifications are available for inspection for each plot at our Marketing Suite during working hours and customers must check their individual specifications prior to making reservation.

USP-16402 CH068-1

KEY

Hob Oven Fridge/freezer w/d Washer/dryer space

dw Dishwasher space op Optional wardrobe

* Max dimensions Note: Bedroom dimensions taken into wardrobe recess

Traditional homes, built the way you remember

REDROW
HOMES