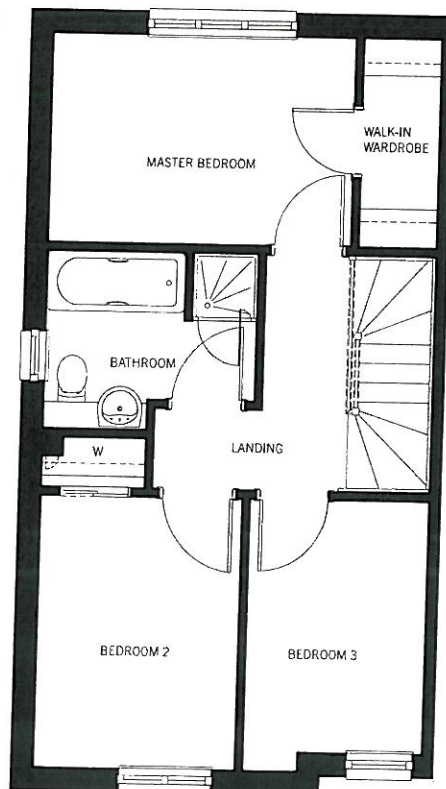
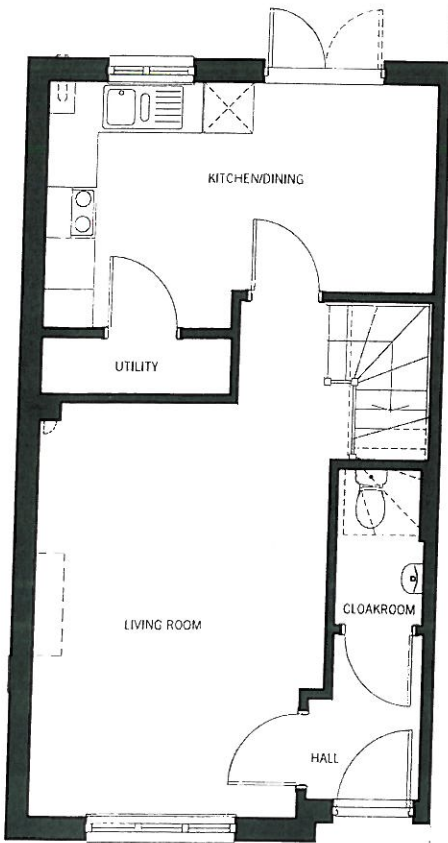


The Bathford/ Argyll

A lovely semi detached or mews three-bedroom home with a spacious living room, fabulous open plan kitchen/dining area with premium appliances and French doors to the rear garden, a separate utility store that is plumbed and wired ready to accommodate your washing machine and tumble dryer and a cloakroom. Upstairs, the master bedroom has a walk-in wardrobe and the second bedroom also has fitted wardrobes. The family bathroom comes complete with fitted vanity units and a bath as well as a separate shower.



GROUND FLOOR

Kitchen/Dining	4780mm (max) x 2905mm (max) 15' 8" x 9' 6"
Living room	3560mm (max) x 4850mm (max) 11' 8" x 15' 11"
Utility	2300mm x 650mm 7' 7" x 2' 2"
Cloakroom	1075mm x 1820mm 3' 6" x 6' 0"

FIRST FLOOR

Master bedroom	3720mm x 2465mm 12' 3" x 8' 1"
Walk in wardrobe	945mm x 2465mm 3' 1" x 8' 1"
Bedroom 2	2470mm x 3180mm 8' 1" x 10' 5"
Bedroom 3	2195mm (max) x 3180mm (max) 7' 2" (max) x 10' 5" (max)
Bathroom	2585mm (max) x 2075mm (max) 8' 6" x 6' 10"