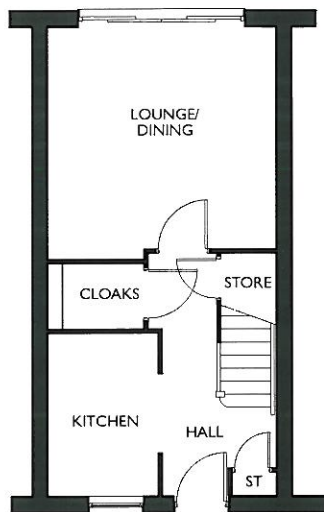
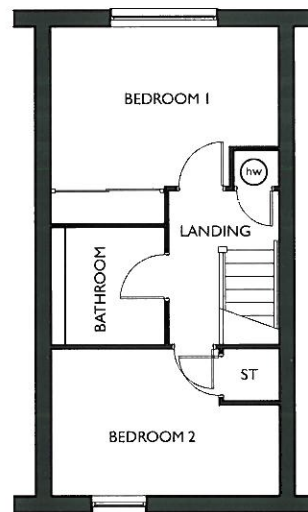


# THE BROADFORD | TWO BEDROOM HOME



### GROUND FLOOR

LOUNGE/ DINING	13'0" x 12'8"	3.959 x 3.864 m*
KITCHEN	9'1" x 6'1"	2.775 x 1.855 m
CLOAKS	4'6" x 3'8"	1.382 x 1.112 m



### FIRST FLOOR

BEDROOM 1	12'8" x 10'11"	3.864 x 3.344 m*
BEDROOM 2	12'8" x 8'2"	3.864 x 2.497 m*
BATHROOM	5'7" x 6'6"	1.705 x 2.000 m

### KEY

hw HOT WATER CYLINDER \* MAXIMUM DIMENSIONS **NOTE** BEDROOM DIMENSIONS TAKEN INTO WARDROBE RECESS



Customers should note this illustration is an example of the housetype. Please refer to your sales consultant for details of any elevational differences. All dimensions indicated are approximate. The specifications will vary from site to site and plot to plot. Detailed plans and specifications are available for inspection for each plot at our Marketing Suite during working hours and customers must check their individual specifications prior to making a reservation. Please note, steel frame housetypes will benefit from a slight increase to some room sizes.



# REDROW

We build only one home. Yours