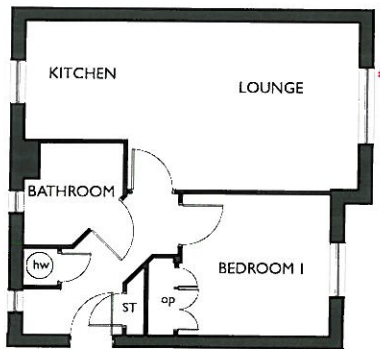
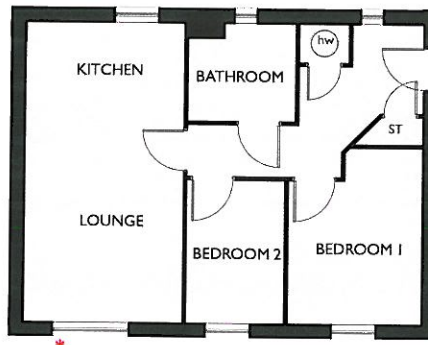


PLOTS 169-174 | ONE & TWO BEDROOM APARTMENTS



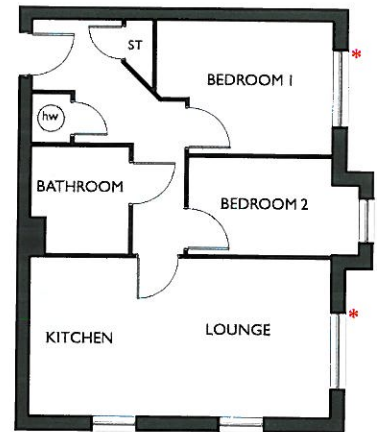
APARTMENT TYPE 1

KITCHEN/ LOUNGE	22'4" x 11'4"	6.802 x 3.457 m*
BEDROOM 1	12'2" x 9'6"	3.700 x 2.895 m
BATHROOM	6'11" x 6'7"	2.100 x 1.995 m*



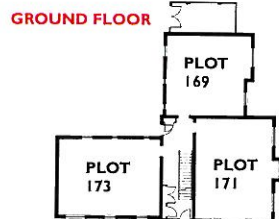
APARTMENT TYPE 2

KITCHEN/ LOUNGE	20'2" x 10'8"	6.152 x 3.245 m
BEDROOM 1	11'10" x 8'11"	3.611 x 2.719 m
BEDROOM 2	9'7" x 6'7"	2.931 x 2.000 m
BATHROOM	7'1" x 6'7"	2.170 x 1.995 m*



APARTMENT TYPE 3

KITCHEN/ LOUNGE	20'2" x 10'8"	6.153 x 3.245 m
BEDROOM 1	11'10" x 8'11"	3.611 x 2.719 m*
BEDROOM 2	11'5" x 6'7"	3.494 x 2.000 m*
BATHROOM	7'1" x 6'7"	2.170 x 1.995 m*



KEY

op OPTIONAL WARDROBE hw HOT WATER CYLINDER * MAXIMUM DIMENSIONS
 NOTE BEDROOM DIMENSIONS TAKEN INTO WARDROBE RECESS
 * WINDOWS ON FIRST FLOOR APARTMENTS ARE JULIET BALCONIES

Customers should note this illustration is an example of the housetype. Please refer to your sales consultant for details of any elevational differences. All dimensions indicated are approximate. The specifications will vary from site to site and plot to plot. Detailed plans and specifications are available for inspection for each plot at our Marketing Suite during working hours and customers must check their individual specifications prior to making a reservation. Please note, steel frame housetypes will benefit from a slight increase to some room sizes.

