

The Buckthorn



Key features

- Fitted kitchen with dining area
- Ample lounge
- Family bathroom

2 bedroom mews home

The artist's colour drawing is from an imaginary viewpoint within an open space area. Its purpose is to give a feel for the development, not an accurate description of each property. The illustration shows a typical Taylor Wimpey home of this type, but there are, however variances from site to site. External materials, finishes, landscaping and the position of garages, (where provided) may vary throughout the development. Properties may also be built handed (mirror image). Please enquire for further details.

[taylorwimpey.co.uk](http://taylorwimpey.co.uk)

# The Buckthorn

## Ground Floor

### Lounge

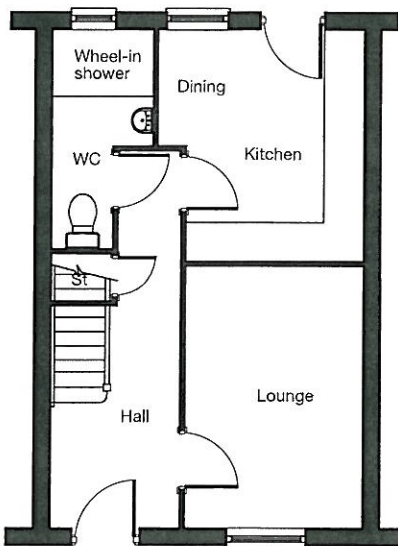
2700mm x 4144mm 9'2" x 13'7"

### Kitchen/Dining

3215mm x 3640mm 10'7" x 11'11"

### WC

1600mm x 3454mm 5'3" x 11'4" †



## First Floor

### Bedroom 1

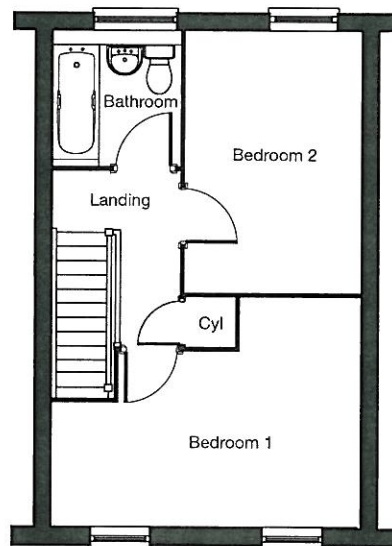
4824mm x 3607mm 15'10" x 11'10" †

### Bedroom 2

2757mm x 4111mm 9'1" x 13'6"

### Bathroom

1992mm x 2104mm 6'6" x 6'11"



† Maximum room dimensions.

The floor plans depict a typical layout of this house type. For exact plot specification, details of external and internal finishes, dimensions and floor plan differences consult your Sales Executive.  
All dimensions are + or - 50mm and floor plans are not shown to scale. GDA September 2009